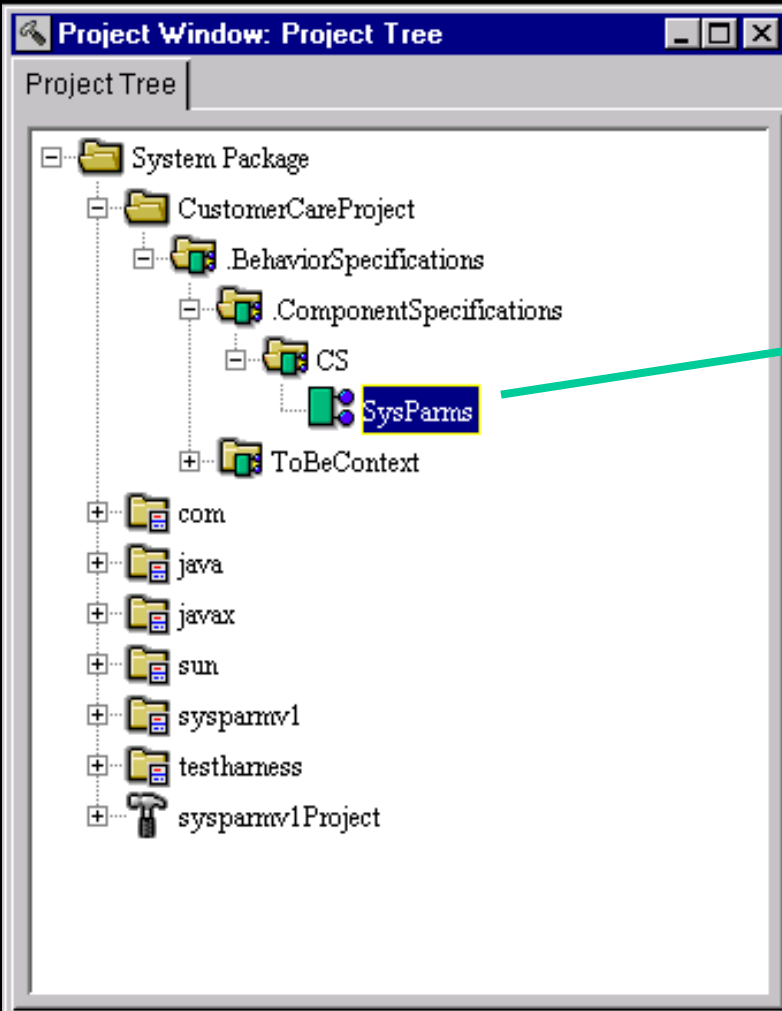
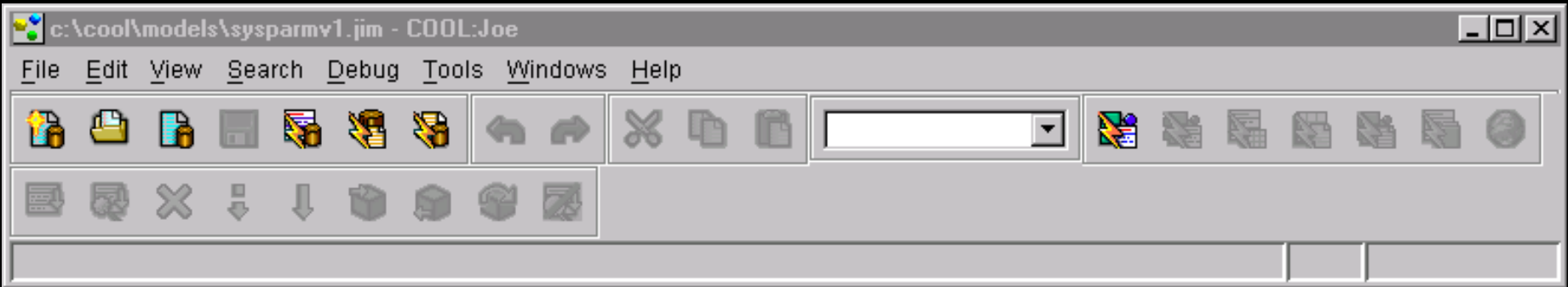


Now lets go look at COOL:Joe in action. We will start first by looking at a high level component specification. Lets start by expanding the COOL:Joe System Package and looking into the CustomerCareProject.




The SysParm component must be implemented as an EJB.

The first thing you might want to do is visualize the component specification.

COOL:Joe can help!

c:\cool\models\sysparmv1.jim - COOL:Joe

File Edit View Search Debug Tools Windows Help



Edit or Create Type Diagrams

Project Window: Project Tree

Project Tree

- System Package
 - CustomerCareProject
 - .BehaviorSpecifications
 - .ComponentSpecifications
 - CS
 - SysPart**
 - ToBeContext
- com
- java
- javax
- sun
- sysparmv1
- testharness
- sysparmv1Project

- Delete
- Rename
- Export to XML...
- Implement Specification...
- Type Diagram...**
- Properties...
- Refresh

